

Call 1800 103 9066 | +91 93805 21576



STAR TRACE
PRIVATE LIMITED



Decide with Confidence



Beneficiation & Material Handling Equipments



Single Source

Incorporated testing, design engineering, fabrication and services are provided to conform tailor-made total systems

Single Source Complete Solutions

Specialized in the fabrication of these machines for 25 years and this enables us to be in a very leading position in the field of beneficiation & material handling equipments

ABOUT STAR TRACE

Star Trace Pvt Ltd is a source of India's one of the largest installed paramount of original equipments, enhance products, technologies and services incomparable with the Beneficiation & Material Handling Equipments. Star Trace delivers a complete flow sheet of products and processes to support for all the beneficiation and material handling equipments solutions from ground zero to the client. Since our inception, we have made indelible mark for ourselves in the engineering industry as a respectable manufacturer and exporter in India.

In addition to our manufacturing abilities, we have also come to be known of our ability to provide turnkey solutions to our customers. The company possesses more than two and half decades experience in this business arena that enables it to offer innovative products in the Beneficiation & Material Handling Equipments in market.

Our products like Magnetic Separators, Lifting Magnets, Vibrating Screens, Feeders, Vibrators and Magnetic Devices are known for their long durability, easy handling and low maintenance, which are possible with use of the best raw materials that go into the manufacturing of our expensive product line.

OBJECTIVES

Geared with the latest technology and manufacturing, we have set down for ourselves a set of objectives that have always guided us to give a better performance. Some of the objectives that we have set for ourselves are:

- ▶ To provide our customers with a consistent level of satisfaction at all times
- ▶ To always nurture the culture of teamwork for achieving our target production capacity within the stipulated time frame
- ▶ To achieve a wider client base and also to exceed their expectations by means of modern and cost effective technology.



INFRASTRUCTURAL PROCESS

Star Trace Pvt Ltd has a state-of-the-art infrastructure that boasts of cutting edges technology. Our production unit is equipped with a facility for different processes at six different locations in Chennai. Our infrastructure is very efficiently handled by our highly qualified professionals. Their skill coupled with our technically advanced production mechanisms have resulted in products that have long work life, require less maintenance, give high performance and have zero-defects. Our dexterous team consists of mechanical engineers, technocrats, installation personnel, quality control personnel and allied staff to provide on-site installation and erection services.

TURNKEY PROJECTS

- ▶ Andalusite beneficiation
- ▶ Pyrophyllite beneficiation
- ▶ Diamond beneficiation
- ▶ Chromite recovery
- ▶ Magnesite beneficiation
- ▶ Wollastonite beneficiation
- ▶ Metal value recovery waste
- ▶ Copper nickel ore
- ▶ Pre-concentration manganese
- ▶ Glass-sand beneficiation
- ▶ Flintclay beneficiation
- ▶ Graphite beneficiation
- ▶ Iron ore beneficiation
- ▶ Manganese ore beneficiation
- ▶ Abrasive cleaning
- ▶ Refractory raw materials cleaning
- ▶ Zinc beneficiation plants
- ▶ Cobalt beneficiation
- ▶ Diatomaceous earth cleaning
- ▶ Kyanite cleaning
- ▶ Glass raw material cleaning
- ▶ Silica sand cleaning
- ▶ Quartz cleaning
- ▶ Feldspar cleaning
- ▶ Dolomite cleaning
- ▶ Bauxite cleaning
- ▶ Ceramic raw materials cleaning
- ▶ Feldspar cleaning
- ▶ Selective separation of Garnet recovery
- ▶ Selective separation of Ilmenite recovery
- ▶ Selective separation of Rutile recovery
- ▶ Selective separation of Zircon recovery
- ▶ Removal of ferro silicates from limestone
- ▶ Removal of magnesite
- ▶ Gold beneficiation plants
- ▶ Explosives materials handling Plants
- ▶ Reduction of Fe_2O_3
- ▶ Reduction of copper in molybdenum concentrates
- ▶ De-ashing and desulfurization of coal
- ▶ Phosphates upgrading
- ▶ Increase of the GEB of kaolin clay
- ▶ Reduction of copper in molybdenum concentrates
- ▶ Reduction of copper in Fe_2O_3 in glass sands
- ▶ Reduction of copper in barites
- ▶ Reduction of copper in ceramic clays
- ▶ Purification of coal
- ▶ Purification of refractory materials
- ▶ Purification of phosphate
- ▶ Mineral beneficiation plants
- ▶ Bulk handling systems
- ▶ E-Waste projects
- ▶ Soil remediation plants
- ▶ Nickel beneficiation

ASSURED QUALITY

Being an ISO 9001:2008 certified company, we have been continually working to live up to our reputation in the industry through stringent quality checking methods. Abiding by international standards and regular upgradation of quality standards, we ensure that none of our products leaves our premises unchecked. In addition to our ISO certification, we have also received certification from the following: NABCB-QMOII and D&B.

INSPECTION AND TESTING

Our strict inspections and testing have ensured that all our products achieve a high level of performance even in harsh conditions and portray distinct features like power ruggedness, greater magnet holding, precision and performance. It has been possible for us to achieve these features by taking cognizance of the client's views apart from arrival of new applications. We are also one of the few companies known for implementing the best project management comprising of high precision standards in variety of activities on site other than Fabrication, Erection and Installation.

CUSTOMER SATISFACTION

Since we are engaged in manufacturing as well as in offering turnkey projects to our customers, we pay utmost attention to customer's specific demands and requirements. We take pride in our ability to tend to all the demands made by the customers concerning designing, fabrication, erection, installation or any other work. We have segregated our workforce for taking care of designing and production work as well as for rendering services for turnkey projects.

MISSION

Our mission is to support our customers to achieve their business objectives by providing innovative solutions with best services on time with equitable price.

VISION

Our vision is to be a global machine manufacturing company with a turnover of one billion dollars in the year 2014.

USER INDUSTRIES

- ▶ Mineral Processing
- ▶ Ceramic
- ▶ Food & Beverages
- ▶ Abrasive Industries
- ▶ Chemical
- ▶ Pulp & Paper
- ▶ Rubber Industry
- ▶ Pharmaceutical Animal Feed
- ▶ Coal Handling Projects
- ▶ Turnkey Projects
- ▶ Soil Remediation
- ▶ E-Waste
- ▶ Mineral Beneficiation & Plants
- ▶ Effluent & Waste Water Treatment
- ▶ Paint & Pigments
- ▶ Sand & Gravel
- ▶ Petroleum, Sugar & Syrup
- ▶ Explosives Materials



FERRITE MAGNETS



Ferrite magnets are composed of strontium carbonate and iron oxide. They are charcoal gray in color and usually appear in the forms of discs, rings, blocks, cylinders and sometimes arcs for motors. A powdered mixture of strontium carbonate and iron oxide is injected into either a wet press or dry press for forming. During this pressing process, a magnetic field is applied in the direction of preferred magnetization to orient the material and increase the magnet's performance potential. This magnet is considered 'oriented'. If not exposed to a magnetic field at the time of formation, it is called 'non-oriented' (Isotropic). After the molding process, the material is then sintered at about 1010°C. This process is similar to that of kilning ferrite pottery, thus the popular name 'Ferrite' magnet. Lastly, the magnet is finish ground to size with a diamond-bladed grinding wheel, magnetized and inspected for shipment.

Attributes of Ferrite Magnets:

- *High intrinsic coercive force
- *Tooling is expensive
- *Least expensive material compared to alnico and rare earth magnets
- *Limited to simple shapes due to manufacturing process
- *Lower service temperature than alnico, greater than rare earth
- *Finishing requires diamond cutting or grinding wheel
- *Lower energy product than alnico and rare earth magnets
- *Most common grades of ferrite are 1, 5 and 8 (1-8 possible)
- *Grade 8 is the strongest ferrite material available.

Applications of Ferrite Magnets:

- *Speaker magnets
- *DC brush less motors
- *Magnetic Resonance Imaging (MRI)
- *Magnets used on lawnmowers and outboard motors
- *DC permanent magnet motors (used in cars)
- *Separators (Separate ferrous material from non-ferrous)
- *Used in magnetic assemblies designed for lifting, holding, retrieving and separating.

* Detailed Catalogue On Request

ALNICO MAGNETS



Alnico magnets are made primarily from aluminium, nickel, cobalt, copper, iron and sometimes titanium. They can be either cast or sintered. Cast alnico melted and poured into a mold. Once solidified, the material is rough ground and then heat-treated and cooled, sometimes in a magnetic field. When treated in the presence of a magnetic field. The magnet is called anisotropic. This orients the material to take on maximum magnetization and allows a higher gauss level. A cast magnet that is not heat treated in magnetic field is called Isotropic. After heat treatment and cooling, the material can be ground to specific tolerances and then magnetized. Sintered alnico is made from a powdered mixture of ingredients that are pressed into a die under tons of pressure, sintered in a hydrogen atmosphere and then cooled either within a magnetic field or without (Anisotropic vs Isotropic).

Attributes of both Cast and Sintered Alnico:

- *Very temperature stable, great for high heat applications
- *Maximum working temperature 525°C - 550°C.
- *Does not lend itself to conventional machining (Hard and Brittle)
- *High residual induction and energy product compared to Ferrite material
- *Low coercive force compared to Ferrite and Rare Earth materials (more subject to demagnetization)
- *Most common grades of Alnico are 5 and 8.

Applications of Alnico Magnets:

- *Magnetic separator
- *Sensors
- *Electron tubes
- *Traveling wave tubes radar holding magnets
- coin acceptors
- *Clutches and bearings
- *Motors
- *Distributors
- *Relays
- *Controls
- *Generators
- *Receivers
- *Telephones
- *Microphones
- *Bell ringers
- *Guitar pickups
- *Loudspeakers
- *Security systems
- *Cow magnets.

* Detailed Catalogue On Request

RARE EARTH MAGNETS



Neodymium magnets (Nd-Fe-B) are composed of neodymium, iron, boron and a few transition metals. Samarium cobalt magnets (SmCo) are composed of samarium, cobalt and iron. These rare earth magnets are extremely strong for their small size, metallic in appearance and found in such simple shapes as rings, blocks and discs. In general, the elements are melted together and milled into a powder that is dry pressed to shape in the presence of a magnetic field. The material is then sintered, aged, ground to dimension, magnetized and tested. They are called "rare earth" magnets because the elements of neodymium and samarium are classified as such in the lanthanides section of the periodic table of the elements.

Neodymium Iron Boron Magnet:

- *Very high resistance to demagnetization
- *High energy for size
- *Good in ambient temperature
- *High priced
- *Material is corrosive and should be coated for long term maximum energy output
- *Low working temperature for heat applications.

- *Magnetic separator
- *Liner actuators
- *Microphone assemblies
- *Servo motors
- *DC motors
- *Computer rigid disc drives
- *Hammer bank printers
- *Speakers
- *Magnetic equipments.

* Detailed Catalogue On Request

SAMARIUM COBALT MAGNET



Samarium Cobalt magnet alloys (generally written as SmCo5 or SmCo series 1:5) have one atom of rare earth samarium and five atoms of cobalt. By weight this samarium cobalt magnet alloy will typically contain 36% samarium with the balance cobalt. The energy products of these samarium cobalt alloys range from 16 MGOe to 26MGOe. These samarium cobalt magnets generally have a reversible temperature coefficient of 0.05% °C. Saturation magnetization can be achieved with a moderate magnetizing field. This series of samarium cobalt magnet is easier to calibrate to specific magnetic field than the SmCo 2-17 series magnets. In the presence of a moderately strong magnetic field, unmagnetized magnets of this series will try to align its orientation axis to the magnetic field. Unmagnetized magnets of this series when exposed to moderately strong fields will become slightly magnetized. This can be an issue if post processing requires that the magnet be plated or coated. This slight field that the magnet picks up can attract debris during the plating or coating process causing for a potential plating or coating failure or a mechanically out of tolerance condition.

Attributes of Samarium Cobalt Magnet:

*High resistance to demagnetization *High energy (magnetic strength is strong for its size).
*Good temperature stability *Expensive material (cobalt is market price sensitive).

Applications of Samarium Cobalt Magnet:

*Computer disc drives *Sensors *Traveling wave tubes *Linear actuators *Satellite systems
*Motors where temporary stability is vital.

* Detailed Catalogue On Request

FLEXIBLE MAGNETS



The material goes through a calendaring process and is formed into sheeting or strip. It can then be easily machined to size and magnetized. High-energy flexible magnets are anisotropic T (oriented), whereas the regular flexible material is not. Therefore high-energy magnets are limited to magnetization through the thickness and are similar in strength to a grade 1 ceramic magnet. Flexible materials offer product designers a uniquely & desirable combination of properties at lower costs than other magnet material. The flexibility & machinability of these materials permit design innovations & automated manufacturing techniques which is not possible with rigid/brittle materials.

Features:

*Can be bent, twisted, coiled, punched & otherwise machined into almost any shapes without the loss of magnetic energy *They can also replace Ceramic 1 materials, if close tolerances are not the requirement & if operating below about 250°F temperatures *Standard grades of flexible materials feature energy products from 0.6 MGOe to 1.6 MGOe.

* Detailed Catalogue On Request

HAND MAGNET



STAR TRACE hand magnet is the most economical and handy type of magnetic separator used for separating tramp iron particles in foundries, plastic scrap chemicals and other related industries. This type of magnets has an additional demagnetisation facility viz.,

In the form of SS304 & 316 cover for easy detachment of tramp iron particles collected by the magnet available in rectangular and round shape. Light weight and handiness are the salient features of this magnets.

* Detailed Catalogue On Request

MAGNETIC FLOOR SWEEPER

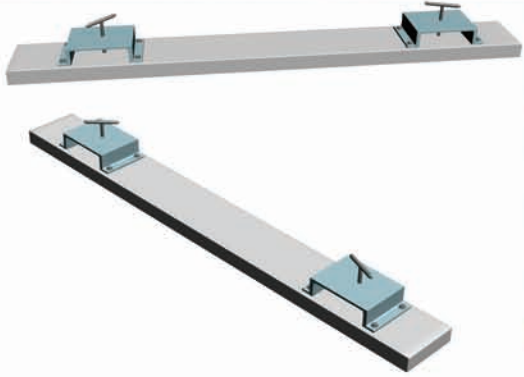


Magnetic Sweepers protect tires from damage caused by nails, screws, wire and other steel objects. It can be used in foundries, parking lots, driveways construction sites, loading docks, truck terminals, landfill roads, airports, stadium, shipyards, race tracks etc. They can drastically reduce tyre repair and replacement costs and eliminate costly downtime by keeping vehicles in service. User can recover that cost of a magnetic sweeper in a few weeks and then continue to save year after year.

Operating this device is simple. Magnetic sweepers are moved over areas that need cleaning automatically picking up loose pieces of ferrous material and holding them until the load is ready to be discharged. Sweepers are non electric. They cost nothing to operate because they are built with permanent magnets. The magnetism is covered by a lifetime warranty.

* Detailed Catalogue On Request

SUSPENSION FORK LIFT MAGNET



STAR TRACE special design of suspension forklift magnet is specifically manufactured for forklift trucks to any width required. The forks slide into the top mounted brackets, which easily lock manually. Ideal for keeping car parks, container depots and warehouses free from nails, nuts and bolts etc. Once the cleaning operation is complete, the magnet can be removed for using at a later date. These are super-powered, permanent magnets for the removal of sharp iron objects from roads, parking areas, loading docks, runways and other important traffic areas. Our suspension magnetic sweepers greatly reduce the possibility of costly dangerous flat tires and injuries caused by nails, scrap iron particles, staples etc. Simply hang a suspension forklift magnet from your vehicle bumper and sweep all contaminated areas. Wipe the face of the magnet with a glove or heavy shop towel to clear. Two eye bolts are installed on each magnet for suspending.

Features:

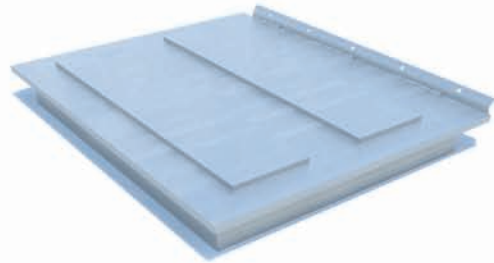
*Robust design *Easy to fit and bolt on manually *Magnetic surface easily cleaned manually
*Corrosion resistant

Specification:

*100mm wide magnetic face *Will pick up contamination from 50-100mm *Manufactured to any width required *When ordering, please specify fork width and centers for fixing purposes.

* Detailed Catalogue On Request

HIGH INTENSITY RARE EARTH PLATE MAGNET



STAR TRACE flush face plate magnets deliver optimum tramp metal separation performance when used in above-the flow chute or belt application. When installed over the material flow, the powerful flush face plate magnets deliver continuous magnetic protection for down stream processing equipment by lifting ferrous tramp out of the product flow stream. Square or rectangular shapes are offered. Customized sizes, shapes and design can also be offered.

Applications:

Magnetic plates are used for trapping ferrous impurities in various minerals, plastics, food stuffs, raw materials etc in powder form. They can be installed in hoppers, chutes etc.

* Detailed Catalogue On Request

FUNNEL MAGNET



Powerful Rare Earth Permanent Magnets with special arrangement are enclosed in a S.S. cylinder. The top plate of the magnetic filter is provided with number of grooves to guide the slurry to a specific path to give the maximum efficiency.

This is a very useful tool to filter out all iron impurities from any liquid very useful for ceramic glazes, colours, oil and chemical industries.

* Detailed Catalogue On Request

BULLET MAGNET



Aerodynamically shaped with a solid stainless steel nose cone, the flow through design of the Bullet Magnet allows the magnet to be used anywhere in a pneumatic line system. It can be used ahead of processing equipment and bulk load out to assure product purity and protect machinery from tramp metal damage.

The nose cone diverter and magnet assembly of the Bullet is designed to maintain a balanced flow through the housing thereby maintaining uniform velocity in line flow. Ideal for dilute phase systems.

Typical Bullet Magnet Applications include:

Movement of powder and granular flour, chemical, plastic, food stuff, pharmaceutical and mineral materials.

The STAR TRACE Bullet Magnet is easily installed with compression type couplings and is available in sizes ranging from 3" to 6" diameters. Rare earth bullet magnets provide an exceptionally powerful magnetic field to capture fine particles previously unattainable.

The Rare Earth Bullet Magnet is easily cleaned by opening the hinged door to remove the magnet from the line. Once the magnet is away from the line a quick pull on the magnet element allows all captured tramp metal to fall off.

* Detailed Catalogue On Request

HUMP MAGNET



Ideal for ferrous tramp metal separation in gravity systems STAR TRACE Hump Magnet separators are adaptable to either round pipe or rectangular chute transfer lines.

Employing two heavy duty diverter equipped spout magnets positioned so that product flowing through the hump is forced into the magnetic fields. STAR TRACE humps take advantage of the offset flow of the material and insure maximum tramp metal removal from the product flow.

The hinged magnets are gasketed and clamped tightly to the hump housing for maximum product and dust containment during processing operation. They swing open for removal of captured tramp metal.

* Detailed Catalogue On Request

MAGNETIC PULLEYS



The comprehensive STAR TRACE line of powerful permanent magnet separation pulleys meet the size and installation requirements of most conveyor systems applications. Installed as head pulleys in conveyor systems the STAR TRACE permanent magnet pulleys provide effective, full time automatic tramp metal removal.

STAR TRACE magnetic pulleys are provided in four different hub styles-extended hubs, flush hubs, recessed hubs and with no hubs. Pulley shafts are removable mild steel and are available with optional stainless steel shaft. Standard pulley sizes range from 4" diameter by 10" face width.

STAR TRACE pulleys are available with or without lagging and with crowned or flat faces. STAR TRACE pulleys provide many years of durability and extended service life.

* Detailed Catalogue On Request

LIQUID LINE MAGNETIC SEPARATOR



STAR TRACE 'T-Trap Magnetic' Separators are designed for heavy duty large volume liquid and semi-liquid line flow system. The T-Trap employs a slip in cage of stainless steel permanent magnet tubes. The function of the magnet tubes is such that the captured tramp metal particles migrate to the rear of the tubes where they remain protected from wash-off until the tubes are cleaned.

The magnet cage has positioning lugs that mate with locating recesses in the body of the tramp. Having a top access bolt on steel plate and seal, the T-Trap is easy to clean. With the top removed the magnet cage is simply lifted out, wiped clean and reinstalled. Available in 7 standard line sizes from 2 to 18 inches in diameter, T-Traps can also be produced to meet special applications.

* Detailed Catalogue On Request

SHEET FANNER MAGNET



STAR TRACE Magnetic Sheet Separators are designed to reduce costs and increase safety when destacking steel sheet stock. A constant powerful magnetic field automatically separates the sheets. As fast as the top sheet is removed, the next sheet instantly moves up. The operator quickly and safely handles one sheet at a time-no longer is prying of sticky, oily, pre-finished or polished sheets necessary. Also eliminated are die damaging due to double sheets.

* Detailed Catalogue On Request

PERMANENT MAGNETIC LIFTER



These type is made by the permanent magnetic of most improvement in the world.

*Designed of ON/OFF. It is very easy and convenient to operate, does not hurt surface of workpiece any more.

*With a safe assembly attached, it will be lock when turn ON or OFF.

*Increase efficiency very much more convenient to move bigger workpiece such as machine parts, press mould, plastic mould, block steel plate and iron material etc. STR series can also hold round steel for smoothy progress in work.

*Permanent magnetic type requiring no power supply, thus eliminating hazards due to failure of wiring system or by service interruption. It features powerful magnetic force, small and light weight.

* Detailed Catalogue On Request

ELECTROMAGNETIC PULLEYS



These powerful Electromagnetic Pulleys are used for effective separating heavy tramp iron and fine iron contaminants from conveyor transported materials. They are ideal to help solve even the toughest iron separation problems involving high speeds, heavy burden depths and hard-to-separate materials.

Equipment Furnished:

The shaft, collector rings, brush holders with brushes and dust-resistant collector ring housing are furnished with each pulley as standard equipment. Lagging is available as an option. Only direct current is suitable for energizing.

* Detailed Catalogue On Request

ELECTROMAGNETIC LIFTER



STAR TRACE Electric Magnetic Lifter systems is useful in wide range for lift the material, such as steel plates, workpiece, machine parts, molds iron material etc.

Features:

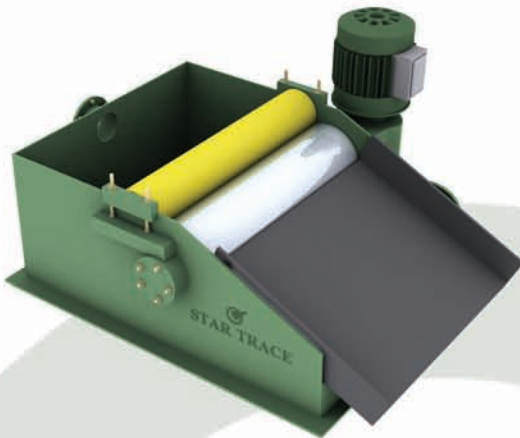
*These Electric Lifter systems must be co-operate continual electric power to operate.

*The lifter working rate at 50% Effective Duty by cycle of repeating to electrify for 5 minutes and to pause for 5 minutes.

*These type can be cooperate the robot and connect in computer program for pick up and down the workpiece, such as CNC machine.

* Detailed Catalogue On Request

MAGNETIC COOLANT SEPARATOR



Our company possesses all necessary infrastructural facilities and trained man power that enables us to cater to numerous industries by manufacturing and supplying a wide range of magnetic coolant separator. We, at Star Trace are aware of the latest trends of industry and make coolant separators accordingly. Over 25 years of long experience of designing, manufacturing and supplying flawless coolant separators has established us a frontrunner in this business domain. Our qualified team of product designers and manufacturers are known for their efficiency and capabilities to offer coolant separators with contemporary designs as per customer's specifications.

The company has been designing and manufacturing filters to various eminent industries across the India. Star Trace filters are applied in various industries like Engineering, Automobile, Bearings, Spindles, Textile, Machinery Rolling Mills, Wire Drawing etc. We supply these filters to both indigenous and imported machines and also applied as original fitment by many machine tool builders. The company offers an extensive range of contemporary models filters at reasonable rates. These model filters are chosen from special/larger system and can be designed and supplied according to client's requirement.

* Detailed Catalogue On Request

ELECTRO MAGNETIC SCRAP DRUM SEPARATOR



A pioneer manufacturer and supplier of well advanced Electro Magnetic Scrap Drum Separator. Star Trace always offers highest quality products, which are manufactured using excellent raw materials by skilled engineers.

Star Trace Electromagnetic Drum Separator opens the way to new efficiency in handling big volumes of large-size material encountered in today's material processing and mineral concentration applications. The coil construction produces a much deeper field than can be produced on electro or permanent pulleys or any other type of magnetic drum separator.

* Detailed Catalogue On Request

BARREL GRATE SEPARATOR



This separator provides 'Final Magnetic Action' on bulk foods. Chemical, pharmaceuticals etc., being packaged in barrels similar type containers. These units are the result of many requests for a portable type magnetic separator for use in a final separating action as materials of large containers. The bank of grate magnets are placed in the housing in a staggered position and lock into place with the support bars fitted into the grooves of the preceding grate. A unit of standard construction has stainless steel tubes with mild steel frame, flange and handles. On stainless steel units the frame, flange and handles are also of stainless steel.

* Detailed Catalogue On Request

CIRCULAR LIFTING ELECTRO MAGNETS



STAR TRACE Load lifting magnets are of robust cast and bolted or fabricated construction designed for handling solid slabs, steel ingots, bloom billets, pig iron, light finished parts, scrap and gives maximum reliable, efficient and economical performance in the most arduous service condition.

Shells of Star Trace Lifting Magnets are made from high permeability steel casting as per IS: 4491 (BSS-1617), properly machined, to provide the most efficient magnetic circuit. The periphery of the magnet is heavily ribbed to give added mechanical strength and an increased radiation surface to aid cooling. Outer poles are machined from high permeability Magnet Steel with center & cored recesses arrangement to product heads of through tensile bolts. The faces of poles from spigot joints in magnet shell, the outer poles of larger magnets are skirted for added production. The pole shoes are easily replaceable. TERMINAL BOX is designed to ensure protection whilst in operation and are of double entry type enabling the leads from the coils to be sealed in a separate cavity. The outside cable is brought through a gland into this second compartment ensuring no possibility of moisture entering the windings.

* Detailed Catalogue On Request

VIBRATORY FURNACE CHARGER



The demand for high quality foundry products and their cost effective production places high demands for furnace charging equipments in melting plants. Though much of the initial head way made in foundry automation was with the mould making process, more important is the melt shop automation. This includes remote furnace charging systems. Automation is mainly thought of as a solution to high labour cost and it certainly can increase workers productivity. However, much more important today is the effect of automation on quality.

Another important advantage that automation provides in foundry environment is enhanced safety. For example automation allows foundrymen to work at a safe distance from molten metal or do their jobs behind protective barriers thus reducing injuries from metal splash or furnace eruption. Also where automation exercises monitoring & control functions, it helps prevent accidents related to in-attention or judgement errors.

* Detailed Catalogue On Request

LOW INTENSITY WET DRUM MAGNETIC SEPARATOR



STAR TRACE Wet Permanent Magnetic Separators are offered in sizes of Dia 1200mm and 916mm in length of up to 3000mm. Three basic separator designs are available for cobbing, roughing and finishing /cleaning applications. Each type can be supplied in a single drum or multiple drum stages for taconite or magnetite and also for recovery for magnetic medium in dense media plants. The stationary magnet yoke is an assembly of strontium-ferrite permanent magnets. The rotating drum is available with optional rubber or stainless steel covers. The magnetic flux pattern will match the tank configuration for optimum performance. Star Trace magnetic wet separator dia 916 x 300mm is the smallest full scale separator in the 916 series and is primarily used for pilot plant tests. The separator can be delivered in concurrent, countercurrent and counter rotation versions.

Star Trace magnetic wet separator for laboratory use have drum dimensions dia. 600 x 285mm and dia. 200 x 100mm and dia are suitable for batch or continuous testing. The test results from the STAR TRACE laboratory separators correspond closely to those obtained in full scale operation.

* Detailed Catalogue On Request

PERMANENT MAGNETIC DRUM SEPARATOR

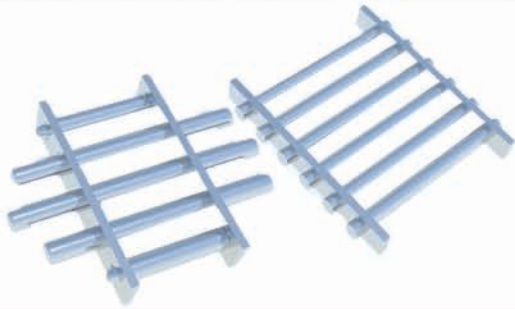


These all-purpose magnetic separators purify free-flowing powders and granular material or concentrate reclaim products in such materials. It also used in processing equipment such as grinders, crushers, roll etc. against tramp iron damage. They can be installed inside closed chutes at outlets of chutes and hoppers or where materials discharge from feeders and conveyors. Its rugged construction is ideal for separating ferrous metal from material such as shredded cars, slag, crushed ore and ash at mass burn plants, in foundries recycling plastic, aluminium and glass.

In similar operation, it has a non-magnetic outside shell that is driven around an internal stationary magnet. Ferrous metal is magnetically drawn out of the material feed held against the revolving shell and released when it reaches a discharge point beyond the magnetic field.

* Detailed Catalogue On Request

HIGH INTENSITY, HIGH POWER MAGNETIC GRILL



Magnetic filters are made up of stainless steel tubes. Each tube consists of an array of permanent magnetic discs specially designed and configured to generate high magnetic forces. The filters can be supplied using either ferrite or rare earth magnets. The tubes have a diameter of either 3/4" or 1" or 1.5". The filters can be supplied in various sizes with width and length varying from 4 to 36 inches. Circular or rectangular shapes are offered. Customized sizes, shapes and design can also be offered.

Applications:

Magnetic filters are used for trapping ferrous impurities in various minerals, plastics, food stuffs, raw materials etc in powder form. They can be installed in hoppers, chutes etc.

* Detailed Catalogue On Request

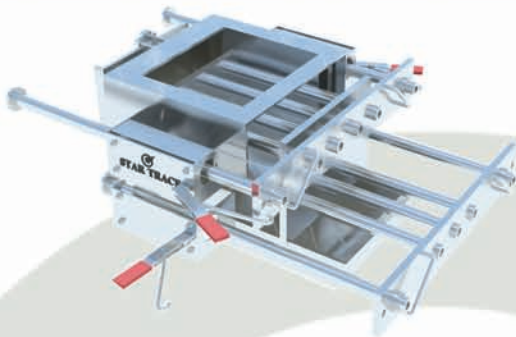
HIGH INTENSITY DRAWER-IN-HOUSING (MANUAL)



STAR TRACE Drawer-in-housing units are tailored to meet a wide variety of industrial tramp metal separation applications. Each housing contains pull out magnet drawers. The drawers have magnet tubes on alternate centers to force a zig-zag material movement between the tubes. Maximum tramp metal capture is achieved as material flows through the housing. The pull out drawers provide for fast efficient cleaning of the captured tramp metal. The body of the housing is constructed of stainless steel as is designed to fit the mating chute, spout, tube or line in which the housing is to be used. Hinged access doors held in place with positive locking devices, provide quick access to the magnet drawers for cleaning. The doors are gasketed for dust control. Customized sizes are available upon request as well as transition to match existing equipment.

* Detailed Catalogue On Request

DRAWER-IN-HOUSING (EZ-CLEANING)



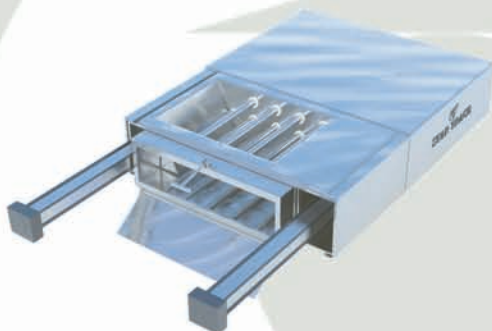
Drawer-In-Housings are designed for ferrous metal separation in a wide variety of dry processing applications. The main body of the housing consists of a row or most commonly rows of round magnetic tubes that are assembled into drawers. Each row of magnetic tubes are aligned on alternating centers from the row directly above or below it. As product flows into the top of the housing, it is forced to cascade in a zig-zag pattern from row to row over the magnetic tubes. This cascading effect ensures maximum tramp metal capture since the product comes in direct and repeated contact with a magnet as it travels through the housing. As ferrous metal passes through the magnetic field, it is held to the tubes and separated from the product. The metal must now be cleaned from the tubes on a regular basis to prevent buildup and subsequent wash-off back into the product flow.

Features:

*EZ-clean operation *New reduced height, designed for replacing *Manual clean housings *304 Stainless Steel construction *Neoprene gasket material for dust control *Hinged rear access door *Collection pan for metal *Positive locking clamps for drawer.

* Detailed Catalogue On Request

DRAWER-IN-HOUSING (SELF-CLEANING)



STAR TRACE Self Cleaning magnetic drawer-in-housing is ideal for hard to reach locations, removal of fine tramp metal or automated processing plants. The Self-Cleaning Drawer-in-Housing is designed to simplify the cleaning process to offer flexibility in locating the magnet in high or difficult to reach places and to encourage frequent and quick removal of collected tramp metal. Standard sizes range from 150mm x 1500mm to 600mm x 600mm inlet and outlet. Customized sizes are available upon request, as well as transition to match the existing equipment.

Operation:

The self-cleaning housing uses automated technology to initiate the cleaning cycle of the magnetic drawer. When activated, two powerful air cylinders, located on the sides of the housing, remove the magnetic drawer from the product flow area. A toggle switch allows operator to actuate cleaning action from a remote location. In seconds, the air actuated stripper device discharges collected tramp metal outside the housing. As the drawer is pushed out, each magnetic tube passes through a seal which wipes the accumulated metal from the tubes. A catch pan is located under the tubes on the front of the housing to collect the metal for analysis or disposal.

Features:

*Self-Cleaning operation *Reduced height, designed for replacing, Manual clean housings *304 Stainless Steel construction *Neoprene gasket material for dust control *Hinged rear access door *Collection pan for metal.

* Detailed Catalogue On Request

SUSPENDED PERMANENT MAGNETS



STAR TRACE suspended permanent magnets (SPM) are designed for high separation performance in over the belt conveyor applications. These heavy duty permanent magnets incorporating all welded construction are particularly effective in removing tramp metal in high volume applications. The SPM series is designed for heavier applications, i.e., coal, grain etc.

Features: *Permanent magnetic field *No electrical hook ups *Compact design *Heavy duty impact plate *Stainless Steel angled cleats.

Options: *Stainless Steel plates *Turn buckles *Easy clean stripper pan *Suspension kit for fixed mounting to conveyor frame.

* Detailed Catalogue On Request

SUSPENDED ELECTRO MAGNETS



Suspended Electromagnets are designed for separation of ferrous metal from a variety of over the belt conveyor applications. Proven in industries such as mining, recycling, tire shredding, pulp & paper, construction & demolition. Star Trace Suspended Electromagnets offer superior strength and reliability. Used in high volume low (less than 150mm) product depth applications, suspended electromagnets offer 'deep reach' capacity and the ability to be turned on & off. Installation options include in-line and cross-belt configurations to meet the specific needs of your applications.

Operation: As the product on a conveyor belt flows under the powerful magnetic field, ferrous material is pulled out of the product flow and held to the face of the magnet. When using a manual clean model, the collected tramp metal is held in place for as long as the unit has power. In order to clean the unit, the power source must simply be turned off, which instantly releases the metal from the magnets hold.

Features: *Non-combustible coolant *External expansion tank *Insulated copper coils / aluminium coils *Manganese impact plate *Lift lugs *1 year limited warranty on coils.

* Detailed Catalogue On Request

OVER BAND PERMANENT MAGNETIC SEPARATOR



STAR TRACE Permanent Magnetic Over band separators are powered by ceramic focused flux, strontium ferrite magnets for superior coercive force. The magnetism in these equipment is produced by an internal assembly of the above magnetic material. This assembly is enclosed in a non-magnetic housing. Star Trace design concentrates attractive power on the surface where it is needed most. The magnetic strength of the permanent magnet will match that of the corresponding size of the electromagnet used for the same application. In Over band permanent magnetic separator, continuous cleaning is made possible by a heavy duty clad belt that encircles the magnet on a series of rotating pulleys. As ferrous metal is attracted and held by the magnet, the moving belt carries the collected metal outside of the magnetic field where it is then released beyond the product flow.

Special Features:

*For extra protection from tramp iron *For increased product cleaning *For heavy duty separation.

* Detailed Catalogue On Request

OVER BAND ELECTRO MAGNETIC SEPARATOR



STAR TRACE Overband electro magnetic consist of an air cooled or oil cooled suspension magnet, supporting structure for the discharge belt with drive drum, tail drum and 2 additional idlers where necessary. The drums, idlers are mounted on suitable self aligning bearings. A suitable geared-motor or motor coupled to gear box is used to drive the discharge belt. The discharge belt is a rubber/canvas or rubber/nylon belt with several plies and cleats. For re-tightening the discharge belt, the fixed axle of the tail drum is fitted with a tensioning device. STAR TRACE offers a wide range of standard Electro overband magnetic separators suitable for belt width upto 2500mm and operating heights upto 1100mm.

* Detailed Catalogue On Request

DIRECT FEED DRUM SEPARATOR



Drum separators provide ferrous metal removal from dry, bulk products in free-flowing processing systems. Due to the nature of their design, Drum separators are continuously self-cleaning units. These separators can be provided as a complete assembly with the housing and the drive package included or as the magnetic drum only. Material to be processed enters the top of the housing and flows across the surface of the drum. As the drum shell rotates around the stationary magnetic field, all non-ferrous product which is unaffected by the magnet, falls free from the drum into the cleaned material flow.

* Detailed Catalogue On Request

MAGNETIC ROLL SEPARATOR



STAR TRACE was the first to introduce indigenous high intensity, high gradient dry permanent magnetic roll separators in the Indian market. These machines which are manufactured are based on the popular permanent roll technology which has been used successfully in thousands of industrial minerals applications around the world. The machine incorporates high energy rare earth neodymium permanent magnetic roll assembly, which is manufactured and assembled under proprietary specifications to generate unsurpassed magnetic field gradients. Under this high intensity magnetic field, weakly magnetic contaminants can be easily removed efficiently. The magnetic rolls can be structured to treat particle sizes ranging from 200 mesh upto 50mm.

* Detailed Catalogue On Request

INDUCED ROLL SEPARATOR



STAR TRACE Induced Roll Magnetic Separator is used for the continuous extraction of small magnetic particles from certain minerals to produce mineral purification for a wide range of mineral and ceramic processing industries. The material being treated is fed from a hopper or vibratory feeder at a controlled rate onto a high intensity magnetic roll. Magnetic material attaches itself onto the roll face or is deflected towards the roll. Non-magnetic material is thrown off the face at a normal trajectory. Magnetic material is discharged off the roll face at a point of lower magnetic intensity aided by a brush. A splitter plate is interposed between the two product streams.

* Detailed Catalogue On Request

WET HIGH INTENSITY MAGNETIC SEPARATOR (WHIMS)

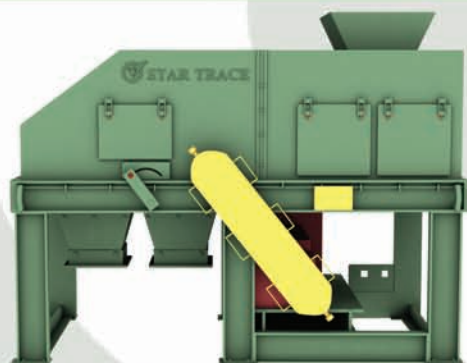


STAR TRACE pulsation high gradient magnetic separator include: STED-500, STED-1000, STED -1250, STED-500, STED-750, STED-2000, STED-2500 and STED-3000 etc and has been widely used in wet separation for weak magnetic metal ore such as hematite, limonite, siderite, chromites, limonite, wolfram etc as well as iron separation for purification of non-metallic mineral, such as quartz, feldspar, nightline, fluorite, kaolin etc. Its separation ring is designed to be vertical fine ore is discharged by reverse flow and also with separation pulse device which settles the problem of being essay jammed in horizontal ring and traditional vertical ring from the very beginning. The magnetic material adopts our own patent products which can get higher magnetic intensity so as to get more powerful magnetic force improve the effect of separations. This series products with advanced to ore granularity, ore density and ore grade which realize the goal concentrations and good reclamation.

Working Principle: Magnetic yoke fixed on the machine frame, which generate the strong magnetic field together with exciting coil. Rotary ring in the clockwise driven by the rotary device and goes through the magnetic field slowly. There are many separation boxes on the outer circle of the rotary ring, there is the multilayer magnetic medium which is made of magnetic material inside the separation box. When the rotary ring goes through the magnetic field, it would be magnetized and formed the high grade magnetic field. In the mineral processing, the mine slurry goes into rotary ring along with the gap of the magnetic pole and the magnetic particle would be attracted in the magnetic medium surface, revolving to the non-magnetic area. The magnetic particle would be put into the fine tank and the non-magnetic material goes into the tailing. Star Trace series vertical pulsation high gradient magnetic separator is installed with the stable pulsating device, which can make the mine slurry up-down moving repeatedly. The pulsating flow force makes the mine particle in the relaxed status that is effective to discharge the non-magnetic particle, improve the fine grade. Mean while, pulse pulp is conducive to the elimination of magnetic medium, increase the working efficiency.

* Detailed Catalogue On Request

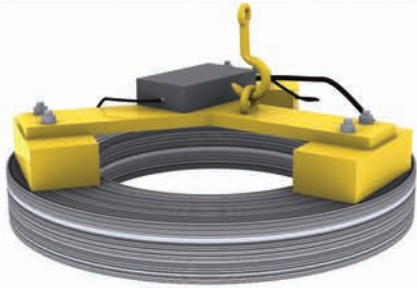
EDDY CURRENT SEPARATOR



STAR TRACE is among the known and established manufacturer and supplier of Eddy Current Separator across South India. Our comprehensive range current separator is an important part for your separation facility. This Eddy current separator uses a highly powerful eddy current rotor, conveyor belt, two variables discharge area and support frame. The optional vibratory feeder provides a consistent flow of materials to the eddy current separators. Vast experience in this business domain has accomplished us in manufacturing top class non-ferrous current separators which are high performing and available at reasonable prices. Current separator is manufactured using the best quality raw materials to ensure complete piece of mind to our reputed clients. These Current separation devices are perfect and effectively work for removing non-ferrous metals from other products. We manufacture current separators which find vast application in many industrial separation processes such as aluminium cans from municipal waste, aluminium flakes from shredded PET, brass and aluminium from foundry sands and metals from shredded automobile scrap. Other metals, such as lead can also be removed using our effective current separator products.

* Detailed Catalogue On Request

COIL LIFTING MAGNET



STAR TRACE Electromagnets On/Off capability and be controlled in automated sheet metal handling system. Through the application of controlled DC electrical current, electromagnets offer controlled holding power and on-command release of ferrous steel parts.

Rectangular & Round Electromagnets: Provide concentrated holding power and high responsiveness in manual or automatic applications.

Parallel Pole Electromagnets: Ideal for lifting or pick and place application where parts have uneven surfaces or odd shapes. They can be custom machined to specifically fit the applications.

Multi-Pole Electromagnets: Ideal for the handling of thick ferrous items such as steel plate, forgings, die castings and other non-flexing items.

* Detailed Catalogue On Request

CONCENTRATOR SEPARATOR



Permanent magnet concentrator separator is widely used for upgrading or concentrating a very high percentage of magnetics or where magnetic/mechanical agitation is required for the separation of many difficult materials.

It is ideal for the upgrading of sponge Iron/Cast Iron borings, Steel/Brass/ Aluminium turnings, Chips and for mineral beneficiation applications such as the purification of dry, ceramic and refractory materials, reclamation of abrasive grains, removal of iron contamination from chemical powders and grains and for many other such application requiring maximum separation with a minimum product loss etc.

* Detailed Catalogue On Request

RECTANGULAR ELECTRO MAGNETS



STAR TRACE Rectangular Magnets are of robust cast and bolted or fabricated construction designed for handling solid slabs, steel ingots, bloom billets, pig iron, light finished parts, scrap and gives maximum reliable, efficient and economical performance in the most arduous service condition. Rectangular magnets for handling steel plates, bar, billets, sections and tubes can be designed and manufactured to meet customer's requirement. The construction of these magnets is similar to above with cast steel shell and poles fabricated from low carbon steel. Very long loads can be handled with two or more magnets spaced on a spreader beam to maintain equilibrium and ensure adequate supply factor.

* Detailed Catalogue On Request

TUBE LIFTER MAGNETS



STAR TRACE new magnetic tube lifter is designed to assist in stacking, destacking, loading and unloading for a variety of tube and pipe applications. This is a permanent magnet that requires a simple burst of shop air to release the row of tube or pipe.

In the result of a loss of shop air, the Tube Lifter is designed to remain in a "failure safe" mode without the need for a battery backup system, simply put the magnet will not drop the tube or pipe, ensuring safer working conditions. The tube lifter is ideal for hydroforming, roll-forming, packing, cutting or tube and pipe fabrication applications.

* Detailed Catalogue On Request

MAGNETIC CHIP CONVEYOR



Gear cutting, spline and deep hole drilling operation involve generation of fine, light and sharp chips, very intimately (interspersed) mixed with cutting coolants. These fine chips escape with the coolants into coolant tanks, pumps and pipelines causing scratching of job surfaces, choke ups & rapid impeller wear etc.

Plain sheet magnetic conveyors help attract these fine ferrous chips from the coolant and effectively separate coolant from chips and thus the conveyor acts as a magnetic filter for the coolant, while conveying chips out of the machine.

The moving permanent magnets mounted on endless chain underneath the stationary stainless steel sheet attracts ferrous chips and slide them on the plate to the discharge end. The coolant separated from chips flows to the coolant tank through an overflow so that even floating chips get attracted by moving magnets and get separated.

* Detailed Catalogue On Request

DIGITAL GAUSS METER (Table top)



STAR TRACE developed a low cost digital table top instrument for measurement of DC magnetic fields is using hall probes. It has two ranges 2 & 20K Gauss. A built in calibration facility ensures quick check of calibration. All the controls are mounted on the front panel and are clearly designed.

An attractive plastic cabinet with carrying cum tilt bracket takes make the instrument light in weight and portable. LED display gives direct reading with 1 Gauss resolution on the 2K range and 10 Gauss resolution on the 20K range. The unit is supplied with a calibrated transverse hall probe of 50mm x 1.5mm with the actual sensing area of 1sq.mm from the tip.

* Detailed Catalogue On Request

DIGITAL GAUSS METER (Hand Held)

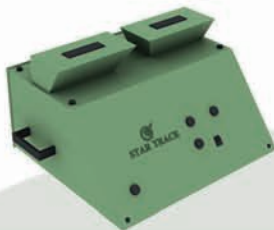


STAR TRACE developed a low cost digital hand held instrument for measurement of DC magnetic fields is using hall probes. It has two ranges 2 & 20K Gauss. A built in calibration facility ensures quick check of calibration. All the controls are mounted on the front panel and are clearly designed. An attractive plastic cabinet with carrying cum tilt bracket takes make the instrument light in weight and portable.

LED display gives direct reading with 1 Gauss resolution on the 2K Gauss resolution on the 20K range. The unit is supplied with a calibrated transverse hall probe of 50mm x 1.5mm with the actual sensing area of 1sq.mm from the tip.

* Detailed Catalogue On Request

MAGNETIZER (COIL TYPE)



STAR TRACE series of magnetisers are totally new types of machines which perform a role of charging of fully assembled speakers by just flick of a button.

They are basically coil based equipment which can fully saturate an assembled speaker magnet.

* Detailed Catalogue On Request

MAGNETIZER (CAPACITOR TYPE)



Impulse magnetizers with magnetisation fixtures made to customer's specifications to magnetise, demagnetise and calibrate magnet systems for an example in electro motors, loudspeakers, sensors etc.

Outstanding Features:

- *2000Volt max. Voltage.
- *10000Ws Energy.
- *25,000A max. current siemens PLC.
- *Digital operator panel digital voltage setting.
- *1V accuracy.
- *Analog voltage monitor.
- *Fixture temperature monitor.
- *Built-in current monitor.
- *Compact design.
- *Single shift 1 year warranty.

* Detailed Catalogue On Request

DEMAGNETIZER (PLATE)



*Suitable for general component spare parts, attachment, tools etc. For fixed way demagnetization.

*After operating by 1 min, it must turned off for 1 min.

*Automatic temperature protection, when temperature reaches to the setting point, the power will be off automatically and then it will restart to work.

* Detailed Catalogue On Request

DEMAGNETIZER (TUNNEL)



- *Super efficiency in demagnetizing and magnetizing suitable for any kinds of metals.
- *Merely using tools to pass through or move into a tunnel will cause a good effect.
- *Suitable for planned automatic process be adapted for delivery belts to proceed in order to increase productivity.
- *Suitable for large production of component spare parts, attachments, tools etc.
- *Suitable for hand manual tools for filling magnetism.
- *Attached a fan inside for dissipating heat.
- *Special specifications will be made subject to customer's requirements.

* Detailed Catalogue On Request

ELECTROMAGNETIC VIBRATING FEEDER



STAR TRACE Electromagnet powered Vibratory Feeder is a high frequency reciprocating machine of light duty capable of conveying bulk material from storage to processing or between processes at a continuous controlled rate of flow.

This Vibrating Feeders are used in processing industries for handling all types of materials such as hot, damp, lumpy, dusty or abrasive for various functions like flow of material from storage, proportioning and blending, packaging, mixing, weighing, sprinkling, screening scalping, crushing, washing, drying, heating, cooling, dusting, spreading, batching etc.

STAR TRACE Vibrating Feeders can be supplied with base mounted, over hanging or combined single magnet drive or twin, dual or dual twin magnet drives or with multiple drives to serve as vibrating conveyors.

* Detailed Catalogue On Request

ELECTRO MECHANICAL FEEDER

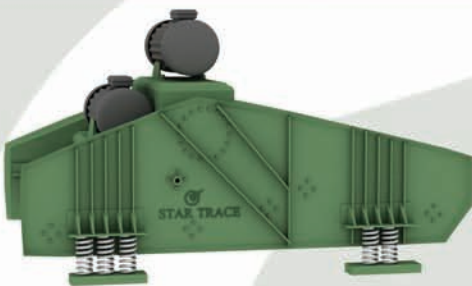


STAR TRACE Heavy-Duty Vibro Motor Powered Vibratory Feeder is a high frequency reciprocating machine of heavy duty capable on conveying bulk material from storage to processing or between processes at a continuous controlled rate of flow.

Thus Vibrating feeders are used in processing industries for handling all types of materials such as hot, damp, lumps, dusty or abrasive for various functions like flow of material from storage, proportioning blending, packaging, mixing, weighing, sprinkling, screening, scalping, crushing, washing, drying, heating, cooling, dusting, spreading, batching and etc.

* Detailed Catalogue On Request

HORIZONTAL VIBRATING SCREEN

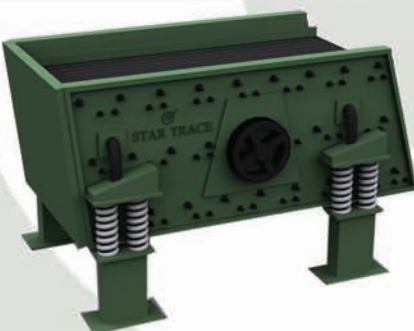


Whilst enjoying immense popularity for many years on small horizontal and inclined screens, STAR TRACE is the first company in the India to perfect this simple drive arrangement on large horizontal and inclined screens. This single development has resulted in tremendous advantages as far as reduced maintenance, compactness and simplicity are concerned. Besides the simplicity of the drive, many other features have been incorporated to provide a machine which is specifically designed for heavy duty applications, long life and low operating and maintenance costs at a competitive price.

The standard range of screens from 300x900mm to 3000x9000mm in single and multi-deck configuration.

* Detailed Catalogue On Request

INCLINED VIBRATING SCREEN



The type universal Vibro Screen is a new generation vibratory screening machine characterized by low profile, efficient protection of support structure from vibrating masses and virtually noiseless operation.

The various versions of these Vibro Screens permit its use for wet and dry screening, coarse and fine separations and are widely used in steel mills, mineral beneficiation plants, chemical, mining, food and fertilizer industries, coal preparation plants and many others.

The standard range of screens from 300x900mm to 3000x9000mm in single and multi deck configuration.

* Detailed Catalogue On Request

VIBRATING CONVEYOR



*Moves high volumes of material with low horsepower requirements. *Levels and orients material as it is conveyed, reducing surges to downstream equipment. *They are built in 10 foot long sections which are bolted together to make up a conveyor of the required length. *Odd length sections are available for use at the ends of the conveyor when the length is not a multiple of 10 feet. *Counter balanced design provides an extremely smooth running conveyor with reduced foundation and support structure requirements.

* Detailed Catalogue On Request

SCREEN SEPARATOR



STAR TRACE Screen Separator is a unique particle size gradeable separator designed for greater capacity per metre square of screening area & over size material discharge with relatively much less percentage fines than other screening machines.

Major User Industries:

- *Mineral processing
- *Ceramic
- *Food & Beverages
- *Abrasive Industries
- *Chemical
- *Pulp & Paper
- *Explosives Industries
- *Rubber Industry Pharmaceutical
- *Animal Feed
- *Effluent & Waste Water Treatment
- *Paint & Pigments
- *Sand & Gravel
- *Petroleum

* Detailed Catalogue On Request

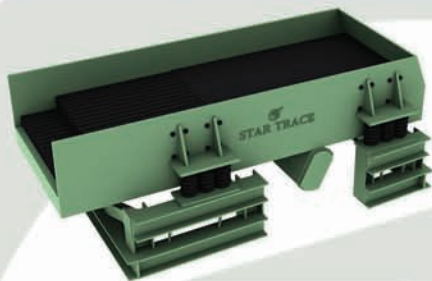
ULTRASONIC GYRATORY SCREEN



The ultrasonic vibrating wave (mechanic wave) added on the sieve mesh makes superfine powder accept the giant ultrasonic acceleration which restrains blockage factors which includes adhesion, friction, pancake, wedging etc and improves sieving and cleaning efficiency.

* Detailed Catalogue On Request

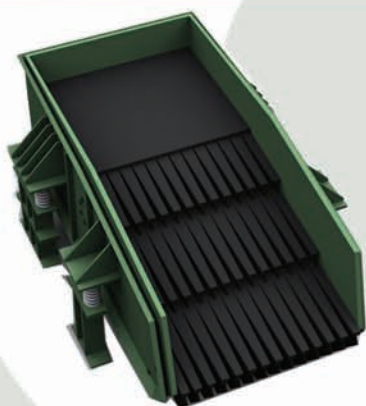
ELECTROMECHANICAL VIBRATING FEEDER



STAR TRACE Heavy-Duty Mechanical Vibrating Feeders are rugged, heavily constructed units, designed to feed run of mine materials, such as large slabs sand boulders in the primary crushing systems of aggregate, ore and coal mining. These extra heavy-duty service feeders are also used for receiving and feeding hot materials, or for installations where they must withstand the impact and wear of heavy and abrasive materials. Dependable operation is assured, even under the most demanding application requirements. Steel troughs have heavy side panels with stiffening ribs and structural steel cross members, welded to make a strong, unitized frame capable of absorbing the punishment of high impacts and heavy loads. Troughs are available upto 30 foot length and upto 8 foot width to suit specific material handling requirements.

* Detailed Catalogue On Request

GRIZZLY FEEDER



The Grizzly Feeder is suitable to feed primary jaw crushers, selecting the large sizes which require primary crushing, the smaller sizes, and any fines which must be eventually rejected. The Grizzly vibro feeder consists of a very large vibrating body made of thick plate, with inside lining of anti-abrasive plate. The Grizzly vibro feeder is driven by two or four vibrating motors. The vibro feeder which may either be placed on a steel or concrete base rest on springs.

Side Mounted Vibro Motor Type:

Boosting throughout of primary crushers:

- 1- A robustly constructed range of vibratory machines extending from units 0.5m wide x 2m long up to units 1.5m x 4.5m.
- 2- The grizzly feeders are intended primarily for use ahead of primary crushers and are designed to handle large run-of-quarry stone, take the impact of dumped loads and smooth out the flow of material to the crusher.
- 3- All models of grizzly vibro feeders have a flat reinforced impact area followed by a sloping grizzly bar section.
- 4- The longer grizzly feeders are fitted with two stepped, grizzly bar sets. Replaceable wear sections of mild steel, manganese steel or rubber are fitted depending on the duty specified.

* Detailed Catalogue On Request

VIBRATORY MOTOR



STAR TRACE Vibratory Motors are totally enclosed 3phase, squirrel cage induction motors with adjustable, eccentric weights mounted at both the ends of the shaft, to set up vibrations during rotation. The design of shaft and the selection of bearings has been carefully done to withstand heavy radial loads.

Applications: These motors are used in various material handling equipment such as vibrating screens, conveyors and feeder. They are also used on hoppers, silos to event congestion of material flow. Foundry shake outs and compacting machines use these motors for fast and efficient operation.

* Detailed Catalogue On Request

ELECTRO MAGNETIC VIBRATOR



STAR TRACE Electro Magnetic Vibrators are connected to an AC supply system with protective conductor by means of a power unit. Power unit are required for the operation of the vibratory units at the prescribed oscillation frequency and for the continuous and practically powerless open or closed loop control of the oscillation amplitude and hence of the delivery flow. A complete range of modules ensures a great variety of applications, e.g. closed loop control of the oscillation amplitude, controlled mill feeding, the integration of conveyor units in super systems controlled by a process computer. Used on hoppers, silos to prevent congestion of material flow.

* Detailed Catalogue On Request

DEWATERING FEEDER



We offer a high quality Dewatering Feeder which is used in various applications.

Features of our Dewatering Feeder are:

1. 900 x 1400mm dewatering feeder driven by two overhead mounted vibratory motors and single polyurethane drainage panels.
2. Head feed to mineral processing equipments often contains excessive moisture adversely affecting the performance of such equipment.
3. Star Trace dewatering feeders are designed to fulfill two basic requirements, remove the excess moisture and regulate the feed rate of the processing equipment.
4. Polyurethane or stainless steel wedge wire screen panels on the feeder pan allow the water to pass through, drying the solids in the feed.
5. The vibratory motors can either be mounted below and to the rear of the pan or overhead. Overhead mounting allows maximum area of drainage panel.
6. The standard range of screen from 300mm x 900mm to 3000mm x 9000mm in single deck configuration.

* Detailed Catalogue On Request

PNEUMATIC VIBRATORS



We are offering a wide range of pneumatic vibrators that are as follows:

1. Ball vibrator
2. Piston vibrator

*Centrifugal force generated by whirling of a spherical mass at high speed on a through toughened and super finished track using compressed air. *Works with industrial quality of compressed air in dirty industrial conditions. Truly a fit and forget equipment. *Find application in flow promotion, screening, compacting. *Noise level of 80 db. Low starting pressures. *Used for flame proof/explosive areas 7 for under water duty. *Highest centrifugal force to self mass.

* Detailed Catalogue On Request

HYDROCYCLONE



Hydrocyclone widely applied in mine-chosen technique in various metal mines. It mainly shows in the following works:

1. Classification for closed circuit grinding.
2. Regrinding for fine mine classification.
3. Mud-removing before selection and after selection.
4. Dam and backfill for gangue.

In closed circuit grinding system, it features high classification efficiency and fine overfall fineness under high mine concentration. Classification efficiency is higher for 5-10% than common screw grader. It benefits for enhancing grader utilizing choose proper specification and mode of cyclone according to grinding processing capacity, overfall fineness and sedimentation concentration. This is precondition of getting the most optimized work condition. Star Trace is able to offer standalone, parallel connection machine or machine series in such specification as Ø50, Ø75, Ø100, Ø125, Ø150, Ø200, Ø300, Ø350, Ø500, Ø660.

* Detailed Catalogue On Request

FLOATATION MACHINE



STAR TRACE designs and manufactures all sizes of flotation cells. Multiple impeller/diffuser configuration can be used to either enhance or restrain mixing depending upon the nature of the ore being treated. The robust design allows the structure to be self-supporting and thus fewer supporting beams are required for installation. Metallurgically the hydrodynamic shape eliminates short-circuiting and prevents sanding. Specially profiled impellers and diffusers enhance efficient pumping of the slurry. Excellent dispersion of the external air feed and homogeneous mixing of the air and slurry all contribute to superior recoveries and grades being obtained. The impellers and diffusers are moulded rubber or polyurethane coated for abrasion resistance.

* Detailed Catalogue On Request

HIGH TENSION ELECTROSTATIC DRUM/PLATE SEPARATOR



STAR TRACE is a well established company actively engaged designing, developing and supplying top notch High Tension Electrostatic Drum/Plate Separator as per customer's requirements. Our engineers offer latest designs of high tension drum/plate separators which are suitable for various industrial applications. These products are designed for separating mixtures of bulk materials, which are differing by their electrical properties. Our high performing high tension drum/plate separators are manufactured by following international quality norms and standards to satisfy the customers at market leading prices. We design and develop high tension drum/plate separators with following features matching with customer's requirements. **Features:** This separator is capable of producing high grade concentrators with fast recovery of valuables owing to three step re-cleaning and facility for heating materials. In addition, it also consumes little electric power and is environment-friendly.

* Detailed Catalogue On Request

RIBBON BLENDER



Horizontal Blenders can be customized to meet each individual customer's needs. Available in commercial duty, standard duty, heavy duty and extra heavy duty construction. Each blender is sized and engineered to meet our customer's specifications. The units are available in carbon or stainless steel construction and optional seal, spray lines and gate designs can be recommended. Jacketed units are manufactured to meet heating and cooling requirements.

Applications:

- *Pigments and Resins
- *Chemicals
- *Detergents additives
- *Herbicides
- *Insecticides
- *Teflon Flakes
- *Roofing Products
- *Architectural Coatings
- *Detergents Additives
- *Hazardous Waste
- *Stabilization
- *Cement and Grout

- *Brake Lining Compounds
- *Compounds
- *Carbon Black and Graphite
- *Wood Flour and Pigments
- *Tobacco Products
- *Tea Leaves
- *Coffee
- *Spices
- *Baking Ingredients
- *Cereal Ingredients
- *Vitamins
- *Pharmaceuticals

* Detailed Catalogue On Request

SPIRAL SEPARATOR



Spirals are gravity concentrators and separate minerals of different specific gravity according to their relative movement in response to gravity, centrifugal force and other forces in the fluid medium. It has extremely good performance and effects in processing placer of beach, riverside, seashore and stream. STAR TRACE spirals are made of polyurethane lined fiber glass with wearable corundum inner surface. Generally there are 5 turns in one start, single, twin, triple and quad starts available per column to suit capacity requirements.

Applications:

- *Rutile, ilmenite and zircon concentration.
- *Iron ore, chromite and manganese beneficiation.
- *Tin, tantalum and ore concentration.
- *Gold, native copper and base metal recovery.
- *Silica sands processing.
- *Titanium-magnetite concentration.

* Detailed Catalogue On Request

CONCENTRATING TABLES



Construction:

Head Motion:

The head motion is of rugged construction and requires minimum maintenance. Its internal mechanism is splash lubricated from an integral oil sump.

Decks: The decks are built of 16mm zircon-reinforced fiberglass with fabricated steel frames at the bottom and are easy to clean, requiring little maintenance. The specific gravity of fiberglass made into decks is one third of that of steel, while its strength reaches as high as 70% that of steel. This fiberglass deck also has the characteristic of water-resistance and corrosion-resistance and can hold the shape unchangeable at $\pm 50^{\circ}\text{C}$.

Applications: Concentrating Tables are designed to wet gravity based separation of minerals and other granular materials. There are many applications where the concentrating table is of particular value and cannot be equaled for economical and efficient performance. They are effective in processing precious and base metal, rare metal and non-metallic minerals.

* Detailed Catalogue On Request

MINERAL JIG



Theory Of Operation:

The In-line pressure Jig is unique in its design and use of jiggling concepts. The unit is fully encapsulated and pressurised and combines a circular bed with a moveable sieve action. The encapsulation allows the STPL to be completely filled with slurry and water. As a result, slurry velocity is slowed and water surface tension eliminated improving recovery potential. The screen is pulsed vertically by a hydraulically driven shaft. Length of stroke and speed of up and down stroke can be varied to suit the application. Screen aperture and ragging dimension and material can also be altered for the application.

Applications:

STAR TRACE pressure Jig is a high yield, high recovery gravity separation device. It has been successfully installed in both alluvial and hard rock applications. Significant advantages have been achieved in grinding circuits where coarse heavy minerals or waste material have been recovered for preferential treatment prior to over grinding. The mineral jig operated to recover free gold, sulphides, native copper, native silver, tin/tantalum, diamonds and garnet. Installations are also planned for coal, lead remediation, magnetite, mineral sands and iron ore recovery. Typically units are installed in the recirculating load with STPL feed consisting of up to 14mm mill discharge or cyclone underflow.

* Detailed Catalogue On Request

TWIN DRUM MIXING SYSTEMS



STAR TRACE mixer consists of twin drums with two counter rotating rotors and specifically angled paddles. The rotors overlap in the centre of the mixer and the paddles completely sweep the bottom and mix all the material at the same time. In zone B the materials have a main movement counter clockwise at the perimeter of the mixer. Simultaneously there are movements in the fluidized zone A both up and down, left and right and back and forth. All the time with space between the particles allowing free and random movement. The interaction of the two zones is the key to the unique mixing technology as all particles are transported into a highly homogeneous mix. STAR TRACE mixer is very flexible in filling volume. The model number indicates the normal filling level i.e., the level just above the rotor shafts and is not to be mistaken for the total mixing volume. From our nominal filling level of 100% variations from 40% to 140% can be tolerated with the same perfect mixing results. The mixing time may be a few seconds longer than normal when mixing very small or very large batches.

* Detailed Catalogue On Request

TUBULAR FEEDER



STAR TRACE tubular feeder ensure that all the material safely transferred from the feed hopper to the required destination. Available in round or square sections, tubular feeder are manufactures in a range of sections from 100mm to 500mm and in lengths of up to 6.5 metres.

Powered either by vibratory motors or electromagnetic drive units tubular feeder can be operated at tube angles from 14 uphill to 15 declination. Star Trace Tubular Feeders ensure that all the material safely transferred from the feed.

* Detailed Catalogue On Request

SCREW CONVEYORS



STAR TRACE have a specialized dedicated team in the design and construction of Screw Conveyors. Each Conveyor is be spoke to the customer's requirements, infinite choices for size speed, material or application.

- *Convey
- *Mix
- *Feed
- *Elevate

Materials such as Sugar, Cement, Biomass, Effluent, Sludge cake, Food stuffs, Animal feed, Ash, Refuge, Glass cullet, Granules, Limestone, Salt, Sand, Wheat and Barley.

* Detailed Catalogue On Request

SCREW WASHER



Screw sand washing machine is mainly used for sand processing, electric pole factory, building work site and concrete dam, various sands classifying and dewatering.

The Screw Washer adopts inclination 15°, under the water tub, three weir plates form the sediment pool, the screw head is immersed in this pool, the screw is driven by electric motor through reducer rotating continuously, the fresh water is feeding from porous plate at bottom of sediment pool, this machine have three functions of washing, dewatering, classifying.

* Detailed Catalogue On Request

AGITATOR



Agitation tank is the necessary equipment that regularly mixes the drugs and slurry, increases pharmaceutical drug reactions.

Agitation tank uses motor V-belt driving impeller to rotate. Regularly mixes the drugs and slurry, increases the role of pharmaceutical drug reactions and enhances the quality reaction time.

This machine applies to the mining dressing and also used as a variety of chemical industry trough cake mix.

* Detailed Catalogue On Request

METAL DETECTORS



STAR TRACE is based in Chennai which is a highly established.... and reputed companies consistently satisfying the growing needs of the market by manufacturing and supplying superior quality metal detectors. Our range of commercial electric metal detectors are made as per demand of customers following the international quality norms. The company is equipped with world-class infrastructure including advanced production unit and modern machines, which facilitate our production capacity. With the combined efforts of our manufacturing, quality control and delivery professionals. We have been successfully fulfilling needs of the industry by our making efficient Metal Detectors. These electric metal detectors are in high demands across India due to their flawless performance and has low maintenance costs.

* Detailed Catalogue On Request

CIRCULAR DRUM SCREEN TROMMEL SCREEN



Vibrating trommel screen are used to separate materials into various sizes for further processing, or for end use. Depending on particular need, the material is separated by passing it through a vibrating "screen box" which has a number of different sized screens or meshes, which the material falls through like a sieve, the material falls onto attached conveyors which stock pile the end products. The end products can then be used in the building and construction industries.

Features of Vibrating Trommel Screen:

- 1) High screening efficiency
- 2) High capacity and reliability
- 3) Long bearing lifetime
- 4) Easy maintenance

* Detailed Catalogue On Request

JAW CRUSHER



The crushing chamber of Jaw Crusher is composed by stationary jaw and movable jaw. The crushing work simulates the movement of animals which use two jaw crushers to crush materials.

Jaw Crusher is widely used in quarry, mining, metallurgy industry, building material, highway, railway and chemical industry etc.

The largest compression resistance of the material to be crushed is 320m pa. It is ideal for the primary crushing. It features high reduction ratio, easy operation, simple construction, repeatable performance, easy maintenance and low consumption.

* Detailed Catalogue On Request

CONE CRUSHER



STAR TRACE Cone Crusher adopts the international advanced techniques to develop this equipment. The design of spring cone crushers structure is distinguish from traditional design and it compiles other advantage of various type of cone crusher. So it is applicable to fine crush of superfine crush various ores, rocks, slag and refractories.

To adopt the techniques of concave and mantle after machining process to connector with cone surface to instead the anciently complicate techniques, Star Trace cone crusher raise efficiency in rock crushing.

It has overload hydraulic cavity and refrigeration lubricating system, which fully ensure the safety and stability of operation. It is widely used in metallurgical mining, architectural, rock & railway etc.

* Detailed Catalogue On Request

BALL MILL



A Ball Mill a type of grinder is a cylindrical device used in grinding (or mixing) materials like ores, chemicals, ceramic raw materials and paints.

Ball Mills rotate around a horizontal axis, partially filled with the material to be ground plus the grinding medium. Different materials are used as media, including ceramic balls, flint pebbles and stainless steel balls. An internal cascading effect reduces the material to a fine powder.

Industrial ball mills can operate continuously fed at one end and discharged at the other end. Large to medium-sized ball mills are mechanically rotated on their axis but small ones normally consist of a cylindrical capped container that sits on two drive shafts (pulleys and belts are used to transmit rotary motion).

* Detailed Catalogue On Request

BELT CONVEYORS



STAR TRACE takes the pleasure to introduce itself as one of the top most manufacturing, exporting and supplying units of Belt Conveyors based in India.

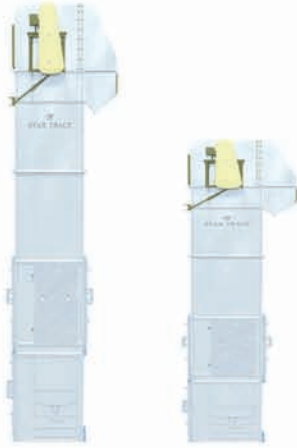
Designed to perfection, these belt conveyors are widely used in diverse industrial applications. We make use of good quality raw materials for manufacturing of these belt conveyors. Thus our Belt Conveyors provide reliable performance and are very durable too. Made available in varied specifications, these belt conveyors are very affordable.

Applications Of Conveyor Belt:

- *E-waste recycling plant.
- *Mining.
- *Metallurgy.
- *Coal industries.

* Detailed Catalogue On Request

BUCKET ELEVATORS



Bucket Elevators are among the most common conveyors used for making vertical lifts of bulk materials. The materials being conveyed can vary over a wide range of sizes from powders to pellets. Most of these bulk materials inherently produce dusty conditions within the bucket elevators, creating explosion hazards.

In the grain storage and handling industry, the bucket elevator is considered to be the most dangerous piece of equipment in the process. Good housekeeping and explosion prevention strategies have reduced the average number of explosions per year but do nothing to mitigate the destructive effects of explosions that do occur.

User Industries:

Agricultural, Chemical, Food, Pharmaceutical, Power, Wood Processing.

* Detailed Catalogue On Request

HAMMER MILL



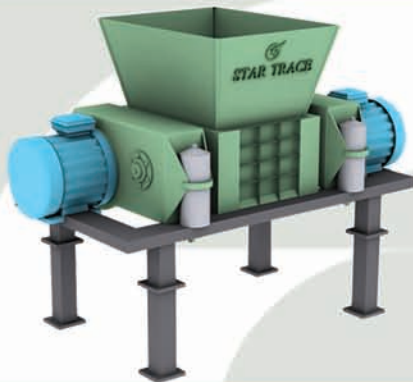
STAR TRACE Hammer Mills are ideally suited to processing applications such as the fine crushing or grinding and drying of soft to medium-hard raw materials and e-waste recycled products. Hammer mills are renowned for their reliability, efficiency and are extremely versatile and adaptable to the most complex of processing demands. Star Trace hammer mill can grind all kinds of materials of pellet feed such as corn, sorghum, grain, legumes, broken cake pellet and others. Building in rotor, grind the raw material with no dead angle, finished products would be more even. Operate door can be moved fully, it is easy to be operated. In-built sealed avoid dust spill out, keep the working environment tidy and clean. It may carry on the ordinary grinding also may carry on the thin grinding and the micro grinding. Thus it has been widely used in the e-waste grinding of the large and medium scale feed factory and so on.

Applications:

Our hammer mills are operations in the raw materials processing, e-waste recycling and chemical industries. The long list of materials processed includes limestone, fertilizer, lignite, dolomite, rock salt, electronic waste and metal shavings.

* Detailed Catalogue On Request

PRIMARY SHREDDERS



Primary Shredders:

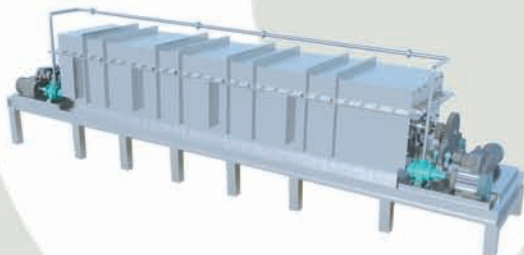
Primary Shredders offered by us is designed to efficiently segregate most of the plastics as well as Ferrous/Non-Ferrous material. Featuring hydraulic motor driven, these are available in different production capacities as demanded by the clients.

Secondary Shredders:

Secondary Shredders offered by us are designed to efficiently segregate and remove plastics & Ferrous/Non-Ferrous materials.

* Detailed Catalogue On Request

RETORTS



STAR TRACE Retorts and Vacuum distillation ovens ranging from 0.5 cubic feet to 40 cubic feet material capacity. Both fuel fired and electric models are available.

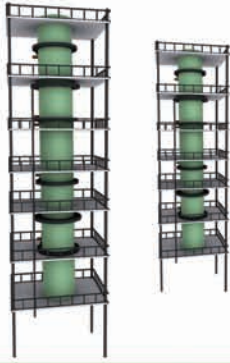
Mercury condensing and handling systems are included with all retort systems.

Custom condensing and mercury handling systems can be provided to meet specific customer requirements.

Our latest generation of 30 and 40 cubic foot electrically heated retorts have no equal for processing high volume, high mercury materials.

* Detailed Catalogue On Request

VERTICAL SHAFT KILNS



STAR TRACE manufacturers, suppliers and exporters of Vertical Shaft Kiln.

- *Application: Clinker, Lime stone, Minerals.
- *Vertical Shaft Kiln technology.
- *Continuous process allowable temperature up to 1500°.
- *Sub-drive through Vertical Mounted Gear Box.
- *Sub-divided in to high alumina fire bricks.
- *Heavy duty Rotary Grade Capacity: 2-10 ton per hour.

* Detailed Catalogue On Request

ROTARY SHAFT KILNS



STAR TRACE manufactures kilns cement plants. We have manufactured high-quality kilns, made of varied materials.

All kilns are excellent heat exchangers where heat is transferred in a variety of ways. We produce kilns which are made with precision and detailed accuracy.

They are highly durable and made with attention to each and every detail as provided by the client.

* Detailed Catalogue On Request

CEMENT SEPARATORS

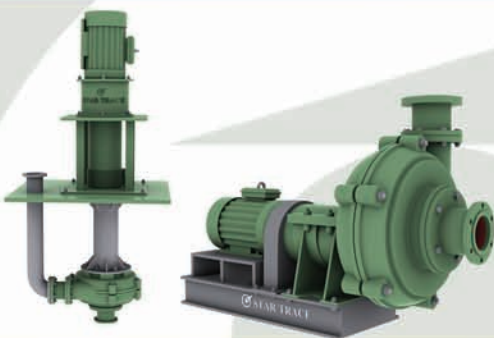


STAR TRACE supply high efficiency separators

- *High availability
- *High selectivity, low energy
- *Consumption
- *Proper product separation
- *Cooling and drying and relatively low capital expenditure are all the features available in our high-efficiency separator

* Detailed Catalogue On Request

SLURRY PUMPS

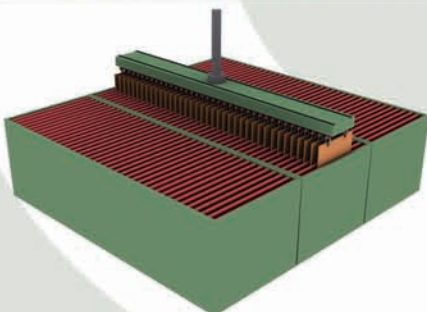


STAR TRACE is one of the most well recognized manufacturers of heavy duty, medium duty slurry and process pumps, vertical slurry pumps, ash slurry pumps, process pumps in India today.

Our company manufacturers advanced slurry pumps and process pumps. Our pump handle tougher abrasive solids and slurry found in mining, steel and glass industries.

* Detailed Catalogue On Request

ELECTROWINNINGS



Electrowinning also called electroextraction, is the electrodeposition of metals from their ores that have been put in solution or liquefied. In electrowinning, a current is passed from an inert anode through a liquid leach solution containing the metal so that the metal is extracted as it is deposited in an electroplating process onto the cathode.

In electrorefining, the anodes consist of unrefined impure metal and as the current passes through the acidic electrolyte the anodes are corroded into the solution so that the electroplating process deposits refined pure metal onto the cathodes.

* Detailed Catalogue On Request

AIR SLIDES/LIFTS



We supply air slides and air lifts which are used for vertical shifting of bulk solids from one level to the other.

It is widely used in cement plants.

* Detailed Catalogue On Request

HOPPERS



The Hoppers manufactured by Star Trace are available in various capacities as required by customers.

Our hoppers are highly durable and have a rugged performance.

Catering to the technological developments our products have successfully met the industrial standards.

* Detailed Catalogue On Request

PRE CALCINERS

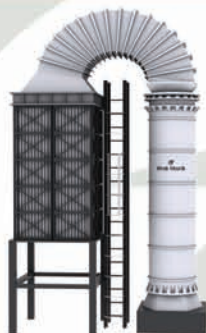


Calciner and pre-heater for pre-calcinations and to utilize cooler recover heat.

Our latest version for calciner & pre-heater to achieve maximum calcinations at kiln entry point.

* Detailed Catalogue On Request

COOLERS



Our cooler has first stationery grate giving fast cooling and efficient recuperation of heat.

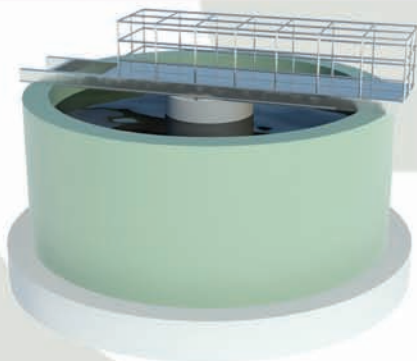
First grate has trouble free operation for two to three years with minimal maintenance.

Other two grates are moving which have new design grate plate giving maximum heat recuperation and good cooling effect to clinker.

These moving grates are able to have clinker bed height of 500 to 1000mm as per process requirement.

* Detailed Catalogue On Request

LEACHING PROCESS



Scrap printed circuit boards were selectively smelted at 1200°C to produce a metallic alloy having three phases. These phases were identified as a lead-rich phase, a low tin content alpha bronze phase and a high tin delta phase.

Electrochemical leaching method on this alloy were done in 1 mol/dm³ sulfuric acid or in 2 mol/dm³ hydrochloric acid (adjusted to an ionic strength of 3 mol/dm³). The lead rich phase was more strongly passivated in sulfate media and in this medium the high tin content delta bronze was more resistant to corrosion than the lower tin alpha bronze phase.

* Detailed Catalogue On Request

DE-STONER



The destoning machine work as a densimetric separator of the stones from the grain. It separates the different impurities by weight. Its removing system allows the separation of small stones from grain before the other treatments. This unit is equipped with several regulation systems which allow the machine to be used for a wide range of products such as nuts, seeds, any kind of dry legumes or paddy.

The following regulations:

- *Regulation of the product flow.
- *Regulation of the speed of the air according to the density of the product to destone.
- *Sieves angle adjusting system in order to make easier the separation by gravity.
- *Stones outlet control to prevent any obstruction.
- *Sieves oscillation adjusting system, improving the production thanks to the acceleration of motion. Regulation of the speed of the product outlet modifying the projection angle, in order to increase the machine production and improve the separation process.
- *Double stoner consists of two Layer of sieve box fitted with unbalanced motor for giving vibratory movement. Complete removal of small & large stones is ensured.

* Detailed Catalogue On Request

ENERGY FINISHING MACHINE



STAR TRACE vibratory finishing machines the media and the components which are carried through the tub/bowl vibrate and travel forward in a spiral or corkscrew motion with the generated vibration.

Advantages:

- *Continuous treatment.
- *No point of rest for components and media during process.
- *Much shorter processing time than conventional barreling.
- *Much gentler action
- *No risk of damage, deflection or distortion while processing delicate components.
- *Components may be inspected at any time without stopping the machine.

* Detailed Catalogue On Request

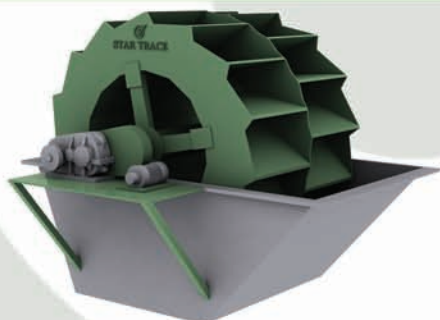
GYRO SIFTER



STAR TRACE Gyro sifter is used to sift mealy and floury for sifting mealy and floury materials and for sorting various granular materials.

* Detailed Catalogue On Request

SAND WASHER



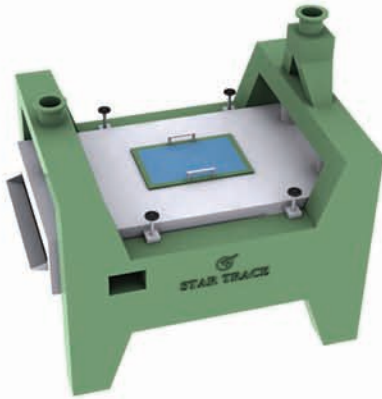
Sand Washer machine is used to remove dust in sand. It aims at improving the quality of sand. It has the characters of a high degree of cleaning reasonable structure, large output and a small loss of sand during the washing.

Applications:

Sand washer machine cleaning materials is widely utilized in the following industries quarries, mineral deposits, building materials, transportation, chemical business, water conservancy and hydropower, concrete mixing station, sand stone ore, building sites, gravel plant, hydropower train station dam site. And with higher cleaning action features, reasonable framework, large capacity, low power usage, small loss of sand within the washing process, especially for the sand washer drive is separated from drinking water and sand. Therefore, it may be less than the failure

* Detailed Catalogue On Request

ROTARY SEPARATOR



Rotary Separator is suitable for fine cleaning, pre cleaning of all types of grain, cereals, pulses, legumes and seeds to the highest quality standard.

It is double deck system equipped with rubber ball self cleaning system to ensure that there is no blockage of material in the sieve perforation.

* Detailed Catalogue On Request

FILTER PRESS (VEGETABLE PROCESSING MACHINERY)



A filter press is highly efficient, compact, dewatering vegetable processing machinery for separating solids from liquid slurries in the form of compressed cake. Its major components are a structured framework, filter chambers (formed by recess portion of Recessed plate system, or frames in plate and frame system) and filter cloth. Filter press technology is very basic in nature, but its application is as important to the various processes it serves, as is a simple wheel to the motive machines.

Filter Press are separation devices used for solid or liquid separation processing that work on feed pressure or squeeze pressure to reduce liquid content in process or waste slurries or to reduce solid content in a product. A filter press consists of a series of horizontally arranged vertical filter plates, each covered with paper, felt medium or synthetic woven material. A mechanical structure called skeleton is used to support the filter plates and a closure mechanism provides the required force on the sealing faces of the plates to counteract the applied force of filtration (squeezing).

* Detailed Catalogue On Request

VIBRATING TABLE



STAR TRACE Vibrating Tables are designed to settle and compact dry and wet bulk materials in various types of containers. Their application provides either a sizeable increase in the net weight of the container or reducing in the container size with subsequent savings in shipping and storage space.

STAR TRACE Vibrating Tables are available in two types Electromagnetic & Electromechanical.

The choice of the proper type and model depends upon the application, characteristics of the material or objects being handled, its reaction to vibration, the maximum weight to be handled

* Detailed Catalogue On Request

MIXTURE



Our mixture machines come to promise industry grade perfection in terms of engineering and stability. Which are Available in customization and standard outputs.

In addition, we have been making utility of the best in terms of dynamics. We achieve this through understanding the markets and the various factors that affect the performance of the mixture machines.

* Detailed Catalogue On Request

Our Esteemed Customers in India



Many more & waiting for you

The Countries We Deal



Many more & waiting for you



STAR TRACE[®]
PRIVATE LIMITED

Single Source

www.startraceltd.com

Corporate Headquarters

Old No: 7, New No: 5,
Jeevanandham Street, Redhills,
Chennai-600 052, India,
Phone: (0091-044) 26418456,
26419439, 32975456.
TeleFax: (0091-044) 26419439
Mobile: (0091) 9380521576,
9380521567, 9841015456.
Email: sales@startraceltd.com

City Office

Old No: 526, New No: 41,
1st Floor, 3rd Avenue Road,
N.S.K Nagar, Arumbakkam,
Chennai-600 106, India.
TeleFax: (0091-044) 43500032.

Myanmar Representative

Mr. KYAW MIN TUN
Mobile: +95-973166695
Email: kyaw@startrace.in

Canadian Representative

Mr. Mahes parteepan
Phone: (001) 2988003549
Mobile: (001) 647 783 9627
Email: mahesh@startraceltd.com

Dubai Representative

Mobile: 00971557526778
Email: mahesh@startraceltd.com

Works

No:11, Moorthasa Ussian
Sahib Street, Redhills,
Chennai-600 052, India.

Indonesia Representative

Mobile: +6281311594498
Email: mahesh@startraceltd.com